

TECHNICAL DATASHEET KALDEWEI SEALING KITS

DESCRIPTION

Sealing system for secure bonding of shower surfaces and bathtubs with surface sealants.

PROPERTIES

- waterproof
- vapour retarding
- tearproof
- alkali resistant
- silicone and acrylic compatible
- rot resistant
- high bond strength with tile adhesive and cement plaster
- suitable for permanent waterproof bonding to bathtubs and shower surfaces made of KALDEWEI steel enamel
- highly heat resistant
- chemical resistant
- colour: grey

TEST CERTIFICATES:

The KALDEWEI sealing kits have been successfully tested in a system according to the general appraisal certificate (abP) with Sopro two-component turbo sealing slurry - TDF 823, Sopro flexible sealing compound - FDF 525 (or FDF 527 contrast colour for the second coat). The sealing tape and the appropriate wall and multifunctional corners were applied and the butt joints outside the shower surface bonded using Racofix universal adhesive - RMK 818, Racofix universal adhesive S - MKS 819 and Sopro two-component turbo sealing slurry - TDS 823.

INSTALLATION INFORMATION:

Installation information is provided in the relevant installation instructions.



KALDEWEI SEALING TAPE

MATERIAL COMPOSITION OF TAPE:

PP with synthetic rubber. The backing is extruded from a thermoplastic elastomer (TPE), the nonwoven is a spunlace nonwoven made of 100% polypropylene (PP).

ADHESIVE STRIP:

The adhesive strip is polyolefin-based with the following properties:

- permanently tacky
- no moisture absorption
- odour-free at room temperature
- non-toxic

THICKNESS DIN EN 1849-2:

0.30 – 0.45 mm

MASS PER UNIT AREA DIN EN 1849-2:

170 – 250 g/m²

TRANSVERSE TENSILE STRENGTH DIN EN ISO 527-3:

≥ 15 N/15 mm

TRANSVERSE ELONGATION DIN EN ISO 527-3:

≥ 150 %

WIDTH DIN EN 1849-2:

120 mm

ADHESIVE TENSILE STRENGTH DIN EN 1348:

≥ 0,2 N/mm²

TEMPERATURE RESISTANCE:

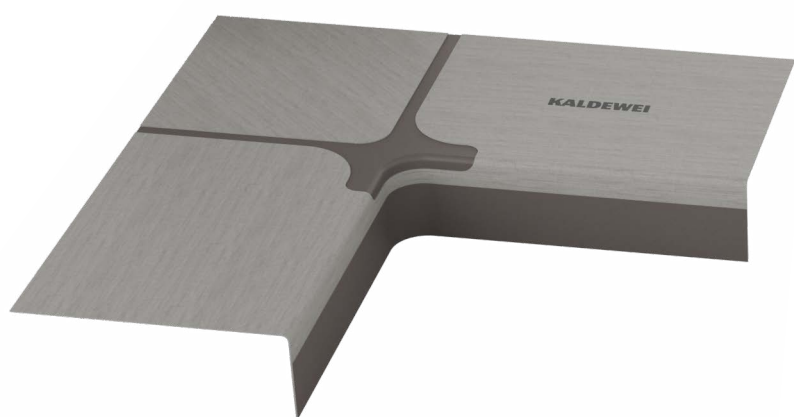
-20 °C to +50 °C

SERVICE TEMPERATURE:

+5 °C to +40 °C

SHELF LIFE:

24 months, when properly stored in a dry location at +5 °C to +40 °C



KALDEWEI MULTIFUNCTIONAL CORNER

MATERIAL COMPOSITION:

PP with synthetic rubber. The backing is extruded from a thermoplastic elastomer (TPE), the nonwoven is a spunlace nonwoven made of 100% polypropylene (PP).

ADHESIVE STRIP:

The adhesive strip is polyolefin-based with the following properties:

- permanently tacky
- no moisture absorption
- odour-free at room temperature
- non-toxic

THICKNESS DIN EN 1849-2:

0.30 – 0.45 mm

UNIT WEIGHT:

8 – 12 g/unit

TEMPERATURE RESISTANCE:

-20 °C to +50 °C

SERVICE TEMPERATURE:

+5 °C to +40 °C

SHELF LIFE:

24 months, when properly stored in a dry location at +5 °C to +40 °C



KALDEWEI WALL CORNER

MATERIAL COMPOSITION:

PP with synthetic rubber. The backing is extruded from a thermoplastic elastomer (TPE), the nonwoven is a spunlace nonwoven made of 100% polypropylene (PP).

ADHESIVE STRIP:

The adhesive strip is polyolefin-based with the following properties:

- permanently tacky
- no moisture absorption
- odour-free at room temperature
- non-toxic

THICKNESS DIN EN 1849-2:

0.30 – 0.45 mm

UNIT WEIGHT:

8 – 12 g/unit

TEMPERATURE RESISTANCE:

-20 °C to +50 °C

SERVICE TEMPERATURE:

+5 °C to +40 °C

SHELF LIFE:

24 months, when properly stored in a dry location at +5 °C to +40 °C