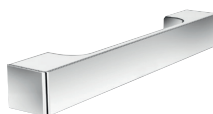
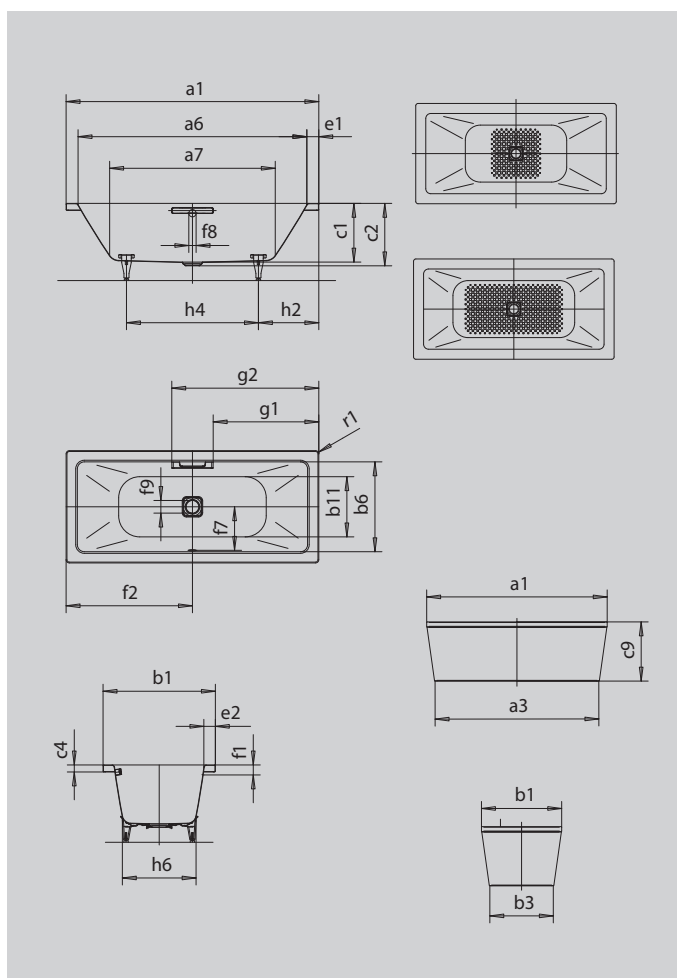


CONODUO FREESTANDING

- straightlined, purist design
- enamelled waste cover and overflow knob integrated in the bath design (also available with filling function)
- classic four-cornered model
- the moulded panel emphasises the high design standard and enables the bath to be free-standing
- bathing with a friend: two identical back rests and centrally positioned waste
- made of KALDEWEI steel enamel
- designed by Sottsass Associati



Similar illustration



Model		734
External length	a ₁	1900 mm
External length (bottom)	a ₃	1733 mm
Internal length (top)	a ₆	1740 mm
Internal length (bottom)	a ₇	1280 mm
External width	b ₁	900 mm
External width (bottom)	b ₃	733 mm
Internal width (top)	b ₆	740 mm
Internal width (bottom)	b ₁₁	620 mm
Depth inside	c ₁	420 mm
Depth incl. waste hole	c ₂	445 mm
Height of rim	c ₄	50 mm
Overall height with panel	c ₉	590 mm
Width of rim (foot end; long side)	e ₁ ; e ₂	80; 80 mm
Distance top edge to centre of overflow hole	f ₁	70 mm
Distance bath edge to centre of waste hole	f ₂	950 mm
Distance centre of waste hole to centre of overflow hole	f ₇	360 mm
Diameter of overflow hole	f ₈	Ø 52 mm
Diameter of waste hole	f ₉	Ø 90 mm
Distance bath edge (foot end) to start of grip	g ₁	802 mm
Distance bath edge (foot end) to end of grip	g ₂	1098 mm
Distance foot end of bath edge to centre of foot	h ₂	570 mm
Distance between the feet	h ₄	760 mm
Width of feet max.	h ₆	610 mm
External radius	r ₁	23 mm
Water volume		220 l
Net weight		100 kg
Anti-slip		500 x 500 mm
Full anti-slip		980 x 500 mm