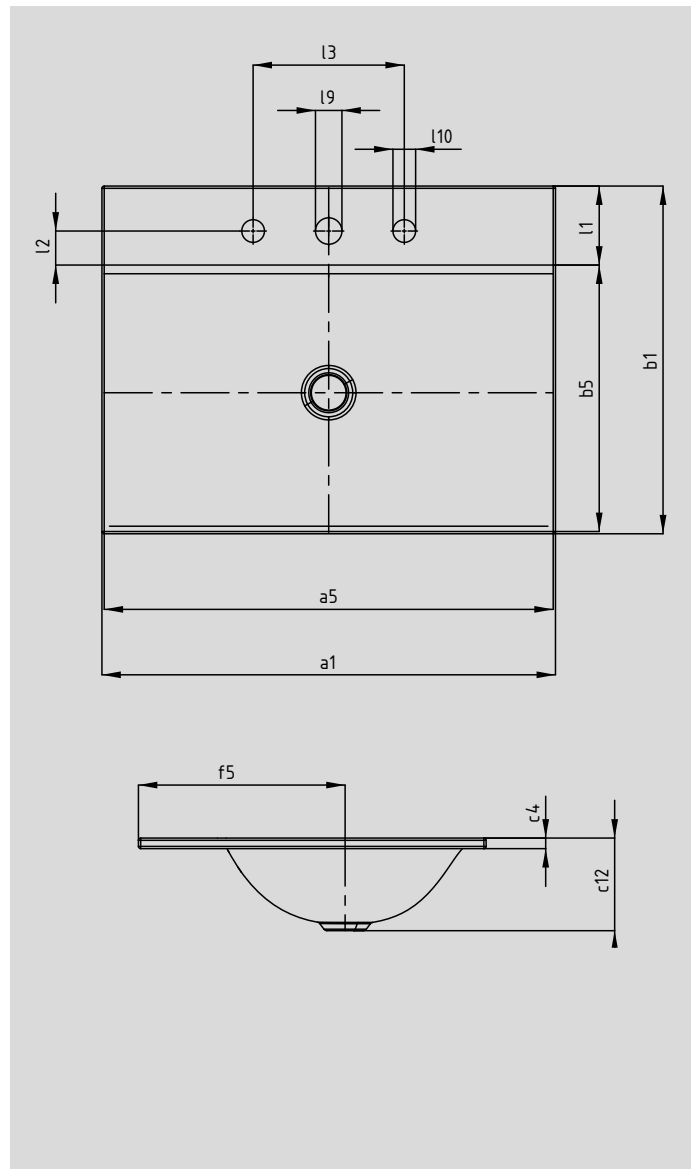


# SILENIO BUILT-IN WASHBASIN

- the flowing, soft design of the washbasin is underlined by a low lip for virtually flush mounting on the console or furniture
- generous space for fittings and individual accessories
- made of KALDEWEI steel enamel
- designed by Anke Salomon



		inch	inch
<b>Model No.</b>		<b>3037</b>	<b>3038</b>
External length	a <sub>1</sub>	23.62	35.43
External width	b <sub>1</sub>	18.11	18.11
Internal length	a <sub>5</sub>	23.39	35.20
Internal width	b <sub>5</sub>	13.88	13.88
Depth of tap deck	l <sub>1</sub>	4.11	4.11
Distance tap holes to edge	l <sub>2</sub>	1.77	1.77
Height of rim	c <sub>4</sub>	0.55	0.55
Distance basin surface to bottom edge of waste hole	c <sub>12</sub>	4.84	4.84
Distance outer edge to centre of waste hole	f <sub>5</sub>	10.76	10.76
Distance of outer tap holes (3 tap holes)	l <sub>3</sub>	7.87	7.87
Weight of the enamelled washbasin in lbs		15.52	22.95

Subject to technical alterations, tolerances and errors. Similar illustration.

**KALDEWEI**